



PRESERVING OUR TAONGA PERMANENTLY



Stage Coach, George Faulknor (active 1859-1905), 1903 [51875].

Car damaged by earthquake, Napier, post 03 Feb 1931 5920

Waka huia, R65/6

Kereru, Te Henga, Don Binney (b.1940, d.2012), gifted by the Ministry of Foreign Affairs and Trade, 2005/38.

All objects collection of Hawke's Bay Museums Trust, Ruawharo Tā-ū-rangi.

Collection

Over the past 160 years, 90,000+ treasures - some of them over 500 years old and worth a total of over \$30m - have been assembled by the Hawke's Bay Museums Trust for permanent safe-keeping.

This significant collection, housed by MTG Hawke's Bay, represents one of the largest regional collections of cultural and archival material in Aotearoa New Zealand.

While some of the collection will be on display at MTG, most of it needs to be carefully preserved so that countless future generations can learn from, understand, enjoy, and treasure the taonga. It's for this reason - to provide a permanent home for the collection - that a purpose-built research and archive centre is underway.



*Huia e, huia tangata kotahi; Toroa e, toroa whakapi tangata.
Huia, your destiny is to bring everyone together...*

Ihaia Hutuna, 1843-1938

Protective Cloak

Traditionally, Māori employ a natural cloak for protection comprising Huia, Toroa and Kura feathers. Bringing the Hawke's Bay collection together under one roof, it is fitting that the building is encased in a cloak of Huia feathers.



Location

MTG Hawke's Bay Regional Research & Archive Centre is being built at the corner of Queen St East and Hastings St North. Along with Toitū, Waiaroha, the Hastings War Memorial Library, and the City Art Gallery, it will be a cornerstone of the Hastings arts, culture and hospitality precinct and transform a tired commercial building into an architectural icon.

Collaboration

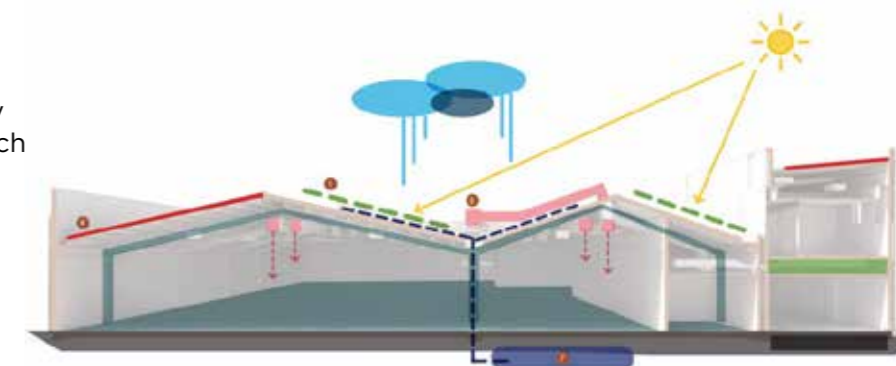
The project is a collaboration between Hastings and Napier Councils, the Hawke's Bay Museums Trust and Ngāti Kahungunu Iwi Incorporated and Ngāti Hori. On top of council investment, \$5.79m has come from the New Zealand Lotteries Commission, and a further \$9m from the Manatū Taonga - Ministry for Culture and Heritage's Regional Culture & Heritage Fund.

Darkhouse

The building's Darkhouse is where the taonga will be archived and stored. Protected from heat, cold, light and humidity - and safe from earthquakes, tsunamis and cyclones - the tens of thousands of objects will be preserved in absolute safety. Permanently.

Sustainability

The re-use of the Briscoes building is environmentally responsible by the very nature of not building new. This approach saves 715 tonnes of concrete and 25 tonnes of steel from being produced. Further measures have been employed where possible to make the building as sustainable as reasonably practicable, including rainwater retention tanks and provision for solar power generation.



Lighthouse

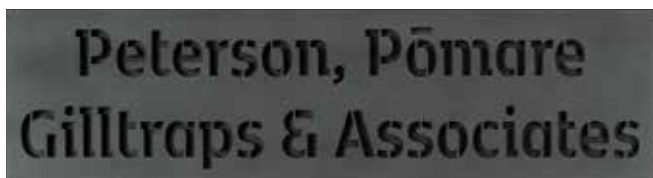
The northern side of the building will form The Lighthouse: a two storey place for conservation, research and conversation. Transparent, and welcoming to all, the Lighthouse will be an illuminated beacon for future generations of Hawke's Bay.

Huia Feathers

The outside of the building, along Queen St East and Hastings St North, will be faced in a protective cloak of 80 enormous back-lit Huia 'feathers', each 6m high and 0.8m across. The huge and dominating feathers, glowing at night, are so iconic they will turn the building into a Hawke's Bay landmark.

Each feather will be individually laser-engraved with a single name: be it an individual, couple, family, business or organisation.

These 80 names will be preserved - permanently - as part of the building's very fabric and will acknowledge those who understand the value of the ongoing preservation of Hawke's Bay's taonga and treasures.



Your Permanent Legacy

The MTG Hawke's Bay Regional Research & Archive Centre is a permanent repository for our nationally significant collection and, along with its iconic feathers, will outlast this generation and future generations well into the foreseeable future.

Whether you're Hawke's Bay born and raised, or a more recent arrival, 'owning' one of the Huia feathers - and having your name permanently laser engraved onto it - presents a unique and very limited opportunity.

For a \$10,000 donation you can name your feather for yourself, your family, your community group, your company or business to show future generations how much you value the history and taonga of our region.

To name your own feather, or to find out more, scan the QR code to visit www.themtgfoundation.com. Or email hello@themtgfoundation.com.

MTG Foundation

The Hawke's Bay Museums Trust is the guardian of the Hawke's Bay collection, which is held for the benefit of the people of Hawke's Bay. The MTG Foundation is a separate entity that sits alongside the Hawke's Bay Museums Trust.

Napier and Hastings Councils fund the care of the collection, however this does not extend to any budget for new acquisitions, which is where the MTG Foundation comes in. We are a body which actively works to raise money and support the development of the Trust's collection.

Donations are tax-deductible. MTG Foundation is a Registered Charity CC47387.



Kiwi and kākā feather muff, 19th Century, gifted by E J Herrick, 64/137



Details of our supporters programme are at: www.themtgfoundation.com
Illustrations are artists impressions only and subject to final design.